

You don't know our Drum pumps yet?
Try us and our products !

No matter if you need ready made sets or individual solutions - **we are your partner for efficient processes!**

For filling, dosing or simple emptying media from containers such as drums, buckets, hobbocks, IBC containers etc.

WS-1 - Garage Drum-Pump-Set

- For frequent use and long operating times
- For non-flammable liquids around the car

Contents of delivery

- 1x Motor p400-A-230
- 1x Pump tube SL-ALU-A-1000
- 2m Hose PVC reinforced ND25
- 1x Hose connector PVDF ND25
- 2x Hose clamp SS 316Ti
- 1x Nozzle Alu ND25
- 1x Barrel adapter PP
- 1x Wall bracket

Order quantity:



Technical Data

Flow rate:	50-80 l/min
Power:	850 W
Voltage:	230 V
Plunge depth:	1000 mm
Item-No.	460-0002

CS-1 - Chemistry-Set

- For frequent use and long operating time
- For almost all low-viscosity, non flammable chemicals

Contents of delivery

- 1x Motor p400-A-230
- 1x Pump tube SL-PVDF-A-HC-1000
- 2m Hose Universal-chemical ND25
- 2x Hose connector PVDF ND25
- 2x Hose clamps SS 316Ti
- 1x Nozzle PVDF/FEP 1 1/4"
- 1x Barrel adapter PP
- 1x Wall bracket

Order quantity:



Technical Data

Flow rate:	50-80 l/min
Power:	850 W
Voltage:	230 V
Plunge depth:	1000 mm
Item-No.	420-0002

BS-1 - Base-Set

- For short and temporary use
- For low viscosity, non-flammable liquids, thinned acids and alkalis

Contents of delivery

- 1x Motor p310-A-230
- 1x Pump tube SL-PP-RSS-1000
- 2m Hose PVC reinforced ND19
- 1x Hose connector PP ND19
- 2x Hose clamps SS 316Ti
- 1x Nozzle PP/FPM/SS ND 19
- 1x Barrel adapter PP
- 1x Wall bracket

Order quantity:



Technical Data

Flow rate :	30-50 l/min
Power:	520 W
Voltage:	230 V
Plunge depth:	1000 mm
Item-No.	410-0002

AS-1 - Around-Set

- For frequent use and long operating time
- For concentrated acids and alkalis

Contents of delivery

- 1x Motor p400-A-230
- 1x Pump tube SL-PP-RHC-1000
- 2m Hose PVC reinforced ND25
- 1x Hose connector PP ND25
- 2x Hose clamps SS 316Ti
- 1x Nozzle PP/FPM/HC ND25
- 1x Barrel adapter PP
- 1x Wallbracket

Order quantity:



Technical Data

Flow rate:	50-80 l/min
Power:	850 W
Voltage:	230 V
Plunge depth:	1000 mm
Item-No.	415-0011

ES-1 - ATEX-Set

- For frequent use and long operating time
- For flammable liquids, flaw acids and alkalis

Contents of delivery

- 1 x Motor EX700
- 1x Pump tube SS-A-1000
- 2m Solvent hose ND25
- 2x Hose fittings brass 1/4"
- 1x Nozzle MS/PTFE
- 1x Equipotential grounding cable
- 1x Barrel adapter PP

Order quantity:



Technical Data

Flow rate:	max. 100 l/min
Power:	700 W
Voltage:	230 V
Plunge depth:	1000 mm
Item-No. Ⓢ	430-0002

Advantages

Low maintenance costs

- Robust, easily exchangeable coupling
- Reinforced immersion tubes
- Strong wave
- Stainless steel for stressed parts
- Sealless pump tubes available
- No thread problems

Low investment and operating costs

- One motors for all pump tubes
- Less operating equipment
- Quick coupling and uncoupling of the motor by bayonet catch, locking bracket or quick-change coupling

No shaft guide tube

- Exposed drive shaft
- Easy to clean
- No dead spaces
- Stable mechanical seal for SD series

High security

- Optional magnetic drive for hermetically sealed pump
- Stable motor-pump unit connection
- ATEX certified drum pumps available

Options



Bayonet lock

- Coupling within seconds
- Robust design
- Stable curved-tooth coupling
- Insensitive to dirt and aggressive environment



MAG

- Magnetic coupling
- Hermetically sealed
- Use for outgassing liquids
- No leakage
- Optional/retrofitable for bayonet lock



QCC

- Quick-change coupling for easy separation of motor and pump
- No lifting device necessary
- Easy disassembly for cleaning and maintenance due to special thread



SL

- Sealless
- For transferring and emptying drums and containers
- The ideal barrel pump for most lowviscosity media



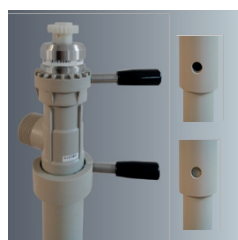
SD

- Quickly dismantlable
- Easy disassembly for cleaning and maintenance



ds

- Eccentric screw pump for medium viscosity liquids
- Gentle promotion
- Lower speed with three-phase motors



MP

- For mixing or pumping (switchable)
- For mixing emulsions, dispersions, suspensions before the pumping process
- In the "mixing" position, holes are opened in the immersion tube so that the medium can circulate in the barrel
- In the "Pump" position, the bores are closed and the pumping station functions as a barrel pump



S

- With feed screw for mediumviscosity media ($\eta > 200$ mPas), when conventional conveying elements reach their application limit
- Can be ideally combined with threephase motors when gentle product conveying is required